



GEL-2681 26-Port L3 Lite Managed Gigabit Switch, 2 x SFP/RJ45 Combo

26-Port L3 Lite Managed Gigabit Switch, 2 x SFP/RJ45 Combo

GEL-2681 L3 Lite Managed Gigabit Switch is a next-generation Ethernet Switch offering full suite of L2 features, including advanced L3 features such as Static Route that delivers better cost performance and lower total cost of ownership in Enterprise networks via fiber or copper connections. GEL-2681 provides high HW performance and environment flexibility for SMBs/ Enterprises. GEL-2681 is ideal to deliver management simplicity, optimum user experience, and lower total cost of ownership. The embedded Device Managed System is designed to be extremely easy-to-use/manage/install IP Phone, IP Cam, or Wifi-AP for Enterprise Applications.

Key Features

- 24 RJ45 ports + 2 SFP (RJ-45/SFP) ports
- 8 QoS queues
- DHCP Client/Server
- IPv6
- IEEE 802.3az (IEEE 802.3az)
- IEEE 802.3ad LACP
- Supports VLAN (Port-based, Protocol-based, Private, Q-in-Q, Tag-based) and GVRP
- IEEE 802.1d/w/s (STP) / RSTP
- IP Multicast Filtering through IGMP Snooping V1 / V2 / V3

System Specifications

System Specifications

Standards & Protocols:

- IEEE 802.3 10-BASE-T, Ethernet
- IEEE 802.3u 100-BASE-TX, Fast Ethernet
- IEEE 802.3ab 1000BASE-T, Gigabit Ethernet
- IEEE 802.3z 1000BASE-X, Gigabit Ethernet
- IEEE 802.1p Quality of Service (QoS)
- IEEE 802.1X Port-based Network Access Control (PNAC)
- IEEE 802.1Q Virtual LANs (VLANs)
- IEEE 802.1D MAC Bridges
- IEEE 802.1d Standard Spanning Tree Protocol
- IEEE 802.1s Multiple Spanning Tree (MSTP)
- IEEE 802.1w Rapid Spanning Tree Protocol (RSTP)
- IEEE 802.3x Flow Control
- IEEE 802.3ad Link Aggregation Control Protocol (LACP)
- IEEE 802.3az Energy-Efficient Ethernet
- Link Layer Discovery Protocol (LLDP)

**Memory:**

RAM : 128 MB

Flash : 32 MB

Buffer Memory:

512 KB

Connectors and Cabling:

24 (10M/100M/1G) RJ45 ports, 2 Combo GbE RJ45/SFP ports and RJ45 Console port.

Button/Knob:

Mode / Reset Button

Indicator:

System, Link/Act/Speed

Transmission Method:

Store-and-Forward

Power Input:

100-240 VAC 50~60 Hz, internal, universal

Power Output:

12 V

Power Consumption:

16.79 W

Features

General:

IEEE 802.3 10-BASE-T, Ethernet

IEEE 802.3u 100-BASE-TX, Fast Ethernet

IEEE 802.3ab 1000BASE-T, Gigabit Ethernet

IEEE 802.3z 1000BASE-X, Gigabit Ethernet

IEEE 802.1p Quality of Service (QoS)

IEEE 802.1X Port-based Network Access Control (PNAC)

IEEE 802.1Q Virtual LANs (VLANs)

IEEE 802.1D MAC Bridges

IEEE 802.1d Standard Spanning Tree Protocol

IEEE 802.1s Multiple Spanning Tree (MSTP)

IEEE 802.1w Rapid Spanning Tree Protocol (RSTP)

IEEE 802.3x Flow Control

IEEE 802.3ad Link Aggregation Control Protocol (LACP)

IEEE 802.3az Energy-Efficient Ethernet

Link Layer Discovery

Security:

ACLs L2/L3/L4

ACLs IPv6 Support

Port Security (MAC-based)

IP Source Guard

Storm Control

RADIUS Authentication 802.1x

TACACS+ Authentication

HTTPs and SSL (Secured Web)

BPDU Guard

STP Root Guard

DHCP Snooping

Loop Protection

Management:

Switch Management:

DHCP Client/Relay/Option 66/Option 67/Option 82

Event/Error Log/Syslog/SMTP (RFC821)

Management Access Filtering/SNMP/Web/Telnet/SSH

www level 1, 2, 3 & 9 Groups)

Software Upgrade

Configuration Export/Import
Port Mirroring
LLDP (IEEE802.1AB)
LLDP-MED (IEEE802.1AB)
CDP Aware
sFlow
IPv6 Management
NTP

L3:

IPv4/IPv6 L3 static route

Ease of Use:

Firmware and Configuration: Upgrade via HTTP

Performance

Backplane (Gbps):

Switching Bandwidth: 52Gbps

Forwarding Performance : 38.7Mpps

MAC Address Table:

8K

Data Transfer Rate:

10/100/1000Mbps

Packet Forwarding Rate:

38.68 Mpps

Jumbo Frame (K):

9600

Environment

Power Saving:

IEEE 802.3az Energy Efficient Ethernet:

- Automatically turns power off on RJ-45 port when detecting link down or Idle of client
- Cable length detection: Adjusts the signal strength based on the cable length
- Reduces the power consumption for cables shorter

Temperature (°C):

Operating: 0°C ~ 45°C

Storage: -20°C ~ 70°C

Humidity (Non-condensing):

Storage: 10% ~ 90%

Operating: 10 ~ 90%

Physical Specifications

Dimensions (W x D x H mm):

442 x 211x 44 mm

Weight (g):

2600g

Reliability

MTBF:

25°C 463,931(hr)

40°C 305,837(hr)



Approval and Compliance

EMI/EMS:

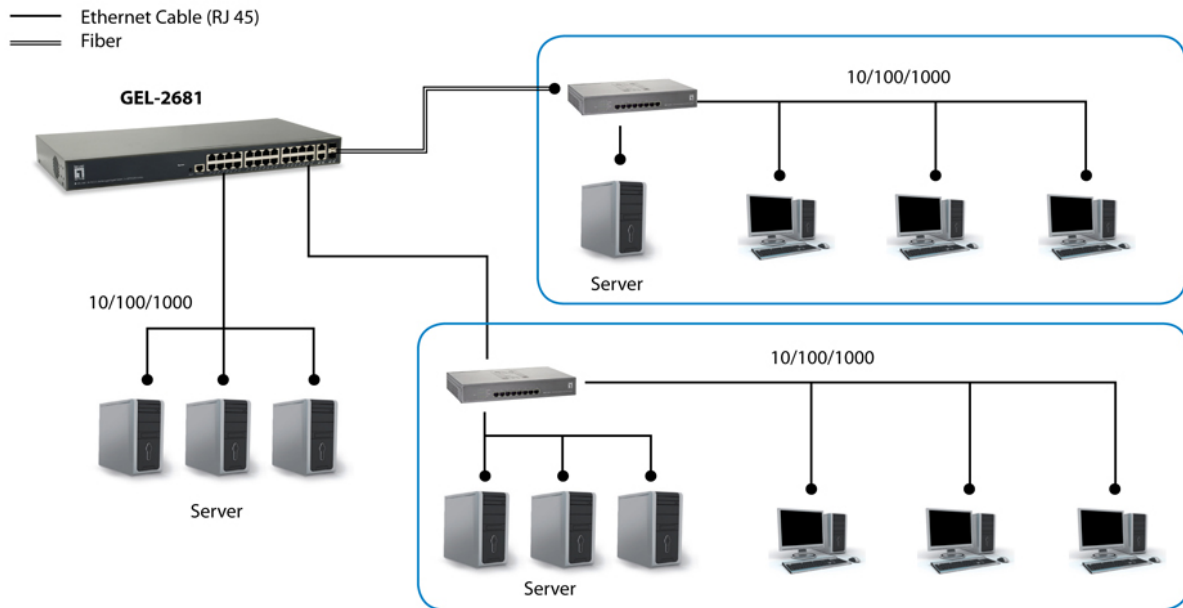
CE, FCC Part 15 Class A

Safety:

LVD

Others:

DMS



Order Information

GEL-2681

Package Contents

GEL-2681

Power Cord

Console Cable

Resource CD (User Manual, QIG)

Quick Installation Guide

19" Rackmount Kit

No liability or responsibility for any errors or omissions in the content.
Specifications are subject to change without notice.
All mentioned brand names are registered trademarks and property of their owners.
Copyright © Digital Data Communications GmbH, Germany. All Rights Reserved.